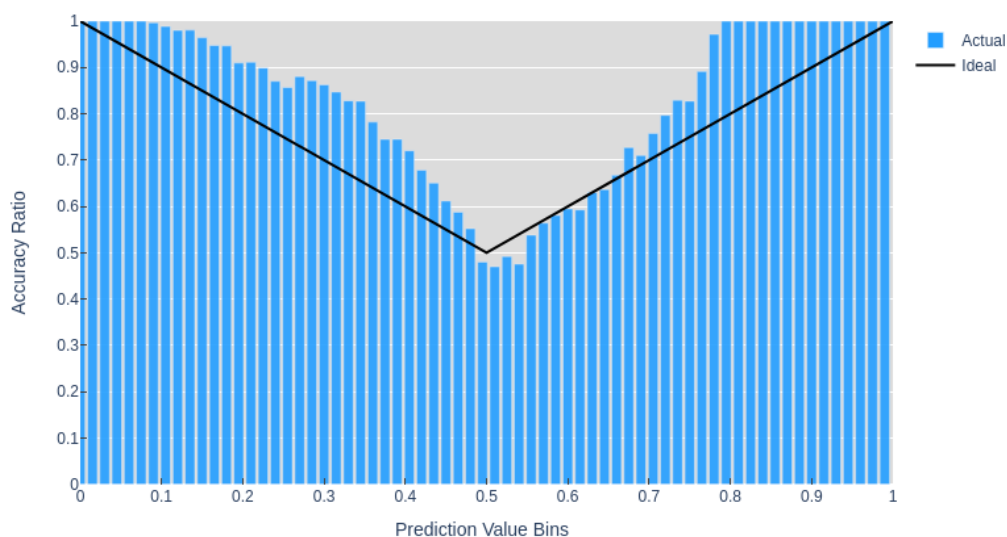


# Prediction Scores are not Probabilities

## TLDR:

In order for a multi-class classifier output to be a valid *probability distribution* over the classes, a score's value would have to indicate how often a label with that score is the correct label. For example, outputs with a score of **.75** should be correct **75%** of the time, no more, no less. This isn't usually the case with neural networks and it's easy to show. **Just adding a softmax activation does not magically turn outputs into probabilities.** The below image shows the proportion of correct predictions vs the output scores for a very simple neural network.



As models and training algorithms get more complex, the outputs typically diverge further from ideal probability estimates.

## Why do I care?

Improving the accuracy of Machine Learning model predictions is the subject of much study. Estimating and calibrating model uncertainty is another field of study, but receives much less attention. I hope to do a full post or series on uncertainty in ML, but for this post I'll be focusing on neural networks and how their outputs lack probabilistically reliable information.

Improving the accuracy of Machine Learning model predictions is the subject of much study. Estimating and calibrating model uncertainty is another field of study, but receives much less attention. I hope to do a full post or series on uncertainty in ML, but for this post I'll be focusing on neural networks and how their outputs lack probabilistically reliable information.

Imagine a neural net used for a medical diagnosis that determines if a surgery is necessary. Such a model should have high accuracy when recommending that a surgery be performed, but it would be additionally useful if the model provided a confidence estimate of its predictions. For example, if it recommended surgery with **75%** confidence, that should mean that out of 1000 cases where surgery was recommended with **75%** confidence, around 750 cases would have actually required surgery. This would allow for experts and patients to determine if that prediction was worth acting on or if more tests or consideration were needed before proceeding.

# Prove it

I've provided code using both [Pytorch](#) and [Tensorflow](#) so that you can see for yourself how various things like the amount of data, training time, and model complexity affect the over or under confidence of a model's predictions. This post and code illustrate how common neural networks and training procedures don't inherently result in models that produce well calibrated confidence estimates.

I'll be using the same architecture as [Model 3](#) (a 2 layer neural network) from my first post with one change: Instead of using a single output value, I'll use two outputs with a Softmax function. This will make the model more similar to models typically used for [multi-class classification](#) problems.

$$\text{softmax}(\mathbf{x}_i) = \frac{e^{x_i}}{\sum_j e^{x_j}}$$

**Softmax Function** This function takes a sequence  $\mathbf{x}$  and returns a sequence  $\hat{\mathbf{x}}$  whose elements sum to 1 and are scaled to preserve each element's rank (position when sorted).

It's this Softmax function that seems to be at the source of the confusion about whether or not the outputs for a NN constitute valid probabilities. If you search something along the lines of "how to get a probability from neural network output" in Google, you'll get things like a medium article with the title "The Softmax Function, Neural Net Outputs as Probabilities", and a [StackExchange post](#) asking a similar question where the top 2 answers suggest using the softmax function. The 3rd response with only 1 upvote suggests "Softmax of state-of-art deep learning models is more of a score than probability estimates."

**So which is right?** Let's quickly define what it would mean if the softmaxed outputs of a K-class classifier were probabilities. First, the probabilities estimates for all classes should add to 1. If the sum is greater than 1 this would imply a greater than 100% chance of some outcome(s). Assuming distinct classes (a model cannot predict that an image is both a cat and a dog) this is not possible. The Softmax function covers this requirement converting a set of any real valued scores into a set of positive values with a sum of 1. Second, as discussed in the case of a surgery recommendation system, the probability estimate should be *well calibrated*: prediction scores should equal the proportion of correct predictions e.g. predictions with 75% confidence should be correct 75% of the time. This is the requirement that we'll be verifying.

We'll use the synthetic XOR dataset from post 1 with 2 output classes: *not\_xor* and *is\_xor*. The benefit of a synthetic dataset is that we can generate as little or as much train and validation data as we want, in order to explore the effect that has on the model outputs. After training we can count the number of predictions that were classified correctly and plot those in bins according to their value.

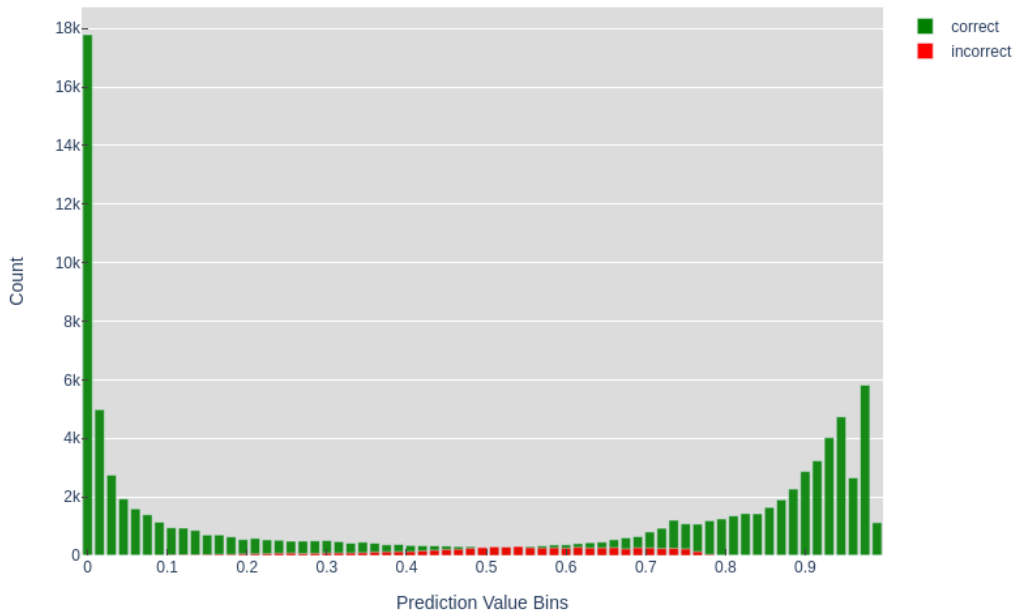


Figure 1.) Counts by *is\_xor* prediction score and correctness (validation dataset)

This model gets around 95% accuracy and we can see that there are a large number of very high and low predictions that are all correct. Whereas the predictions with scores near 0.5 seem equally as likely to be right or wrong. This is a similar trend to what we might expect if the prediction scores were valid probabilities. The next plot shows the ratio of correct predictions in each bin and makes it a bit easier to make sense of the values in the middle bins.

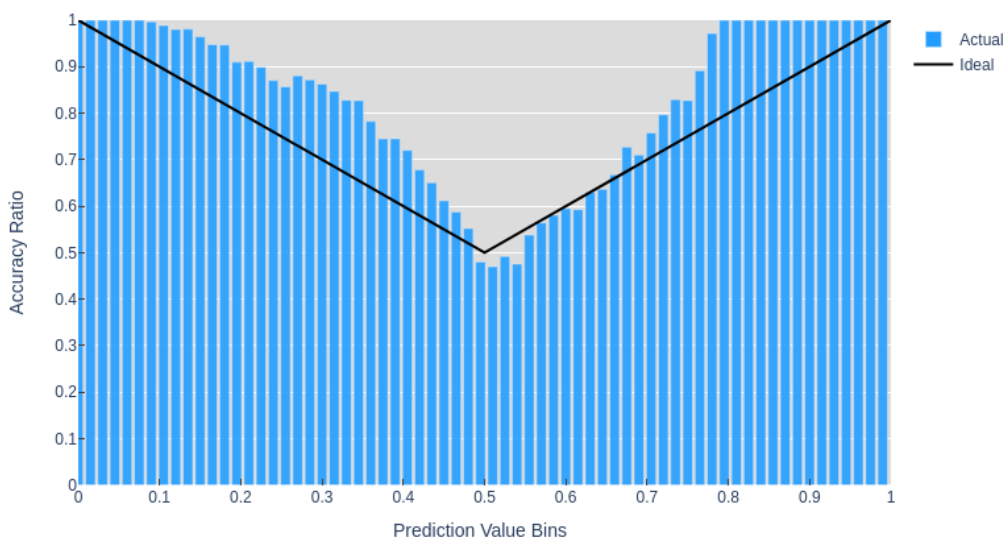
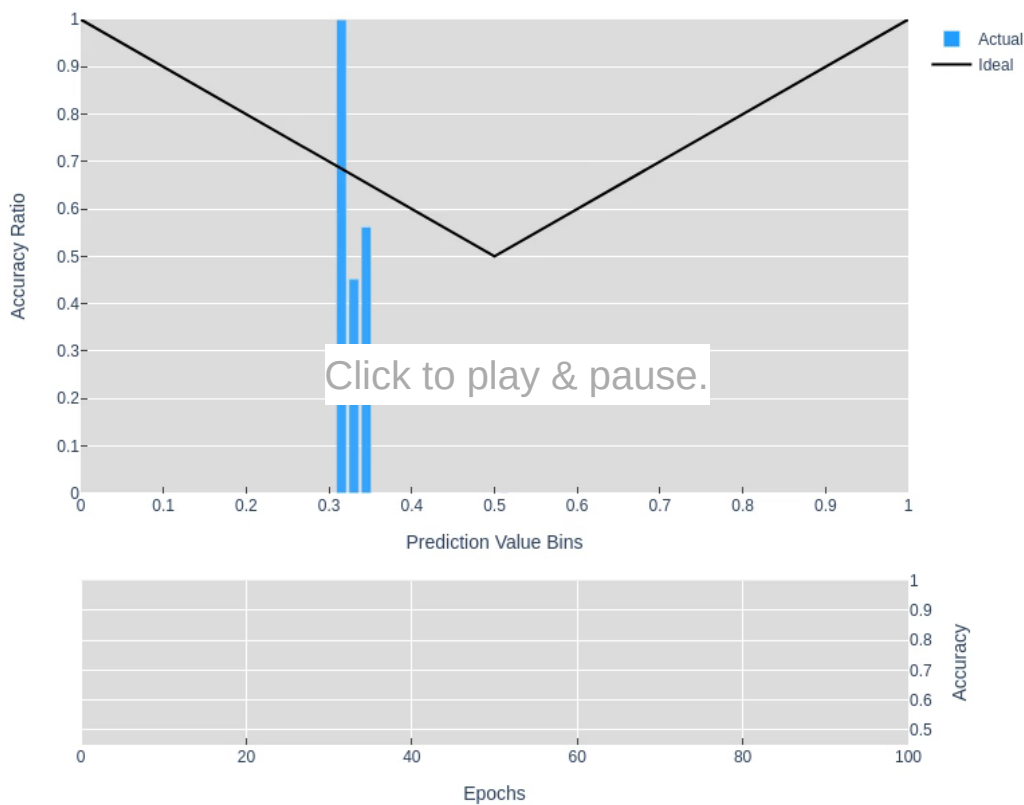


Figure 2.) Ratio of correct predictions by *is\_xor* prediction value bin (validation dataset)

You might expect the ideal line to be  $y = x$ , but for values  $< 0.5$  this is not the case. The prediction (the class with the largest value) will always be  $> 0.5$  since this is a  $K = 2$  class classification and the predicted scores always sum to 1. I've opted to just run with this symmetry and include the accuracy ratios for both classes in one plot. So a *not\_xor* prediction with a score of 0.9 and an ideal accuracy ratio of 0.9 is the same as a *is\_xor* score of 0.1, which we can see in corresponds to the ideal ratio of 0.9.

Figure 2. shows that in many cases the actual proportion of correct predictions deviates significantly from the *ideal* values that would be output if the model predictions were probabilities. This model underestimates some of its predictions: the model outputs a low score of around 0.80, but gets 100% accuracy for those examples. These plots have been generated from validation data on 50× more data than the training set to ensure we get a representative sample. Typically, high accuracy is the primary focus and holding out so much data to verify a model's calibration is not prioritized.

Try messing around with different settings in the notebook and you'll likely see that the graph above shows a relatively well calibrated model<sup>1</sup>(especially compared to one in which you try to squeeze out as much accuracy as possible). What I hope is clear is that if this is the case with such a simple model and a large amount of uniform data, then it is unlikely that more complex models and datasets would produce valid probability estimates as outputs.



**Animation 1.)** Ratio of correct predictions by prediction value over time (validation set)

**Bottom:** Accuracy over time.

As mentioned earlier there are a number of factors that affect how close prediction scores are to being valid probability estimates of accuracy, the animation above shows how these estimates vary over the course of training, but a full analysis of these effects is beyond the scope of this post. If you're interested in learning more, [this paper](#) analyzes common models like ResNet, digs deeper into the effect of various modeling choices, and introduces a way to calibrate models to output scores that are better probability estimates.

Feel free to reach out with any questions or comments on the tweet below and follow me [@tuckerkirven](#) to see announcements about other posts like this.